

Arklow Bank Wind Park 2

Maximum Suspended Sediment Concentrations
Following Inter-Array Cable Installation in the
North of the Array Area

Legend

- ABWP2 Array Area
- ABWP2 Cable Corridor and Working Area
- Coastal Processes Study Area
- Special Area of Conservation (SAC)
- Installation Route Modelled

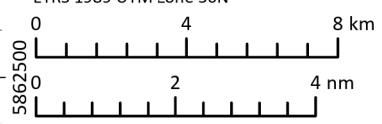
- Suspended Sediment (mg/l)
- 1 - 2.49
 - 2.5 - 4.99
 - 4.5 - 9.99
 - 10 - 19.99
 - 20 - 31.7 (31.7 - Average Baseline SSC Value)
 - 31.8 - 44.99
 - 45 - 54.99
 - 55 - 64.99
 - 65 - 74.6 (74.6 - Maximum Baseline SSC Value)
 - 74.7 - 99.99
 - 100 - 249.99
 - 250 - 499.99
 - 500 - 999.99
 - 1,000 - 1,999.99
 - >2,000

*Shown for a high and low current regime on a
flood (northwards) and ebb (southwards) tide

Notes

Esri, Intermap, NASA, NGA, USGS, OceanWise, Esri, GEBCO, Garmin, NaturalVue, Esri, CGIAR, USGS, Sources: Esri, TomTom, Garmin, FAO, NOAA, USGS, © OpenStreetMap contributors, and the GIS User Community. Contains Ordnance Survey data © Crown copyright and database rights (2022). OS OpenData.

Coordinate System:
ETRS 1989 UTM Zone 30N



Scale 1:200,000 @ A3 Date 13/02/2026 Drawn By GB Checked By AK Approved By LK

Suites B2 & C2
Higher Mill
Higher Mill Lane
Buckfastleigh
Devon
TQ11 0EN
www.gobeconsultants.com
+44 (0)1626 323890



Figure Number 6.22

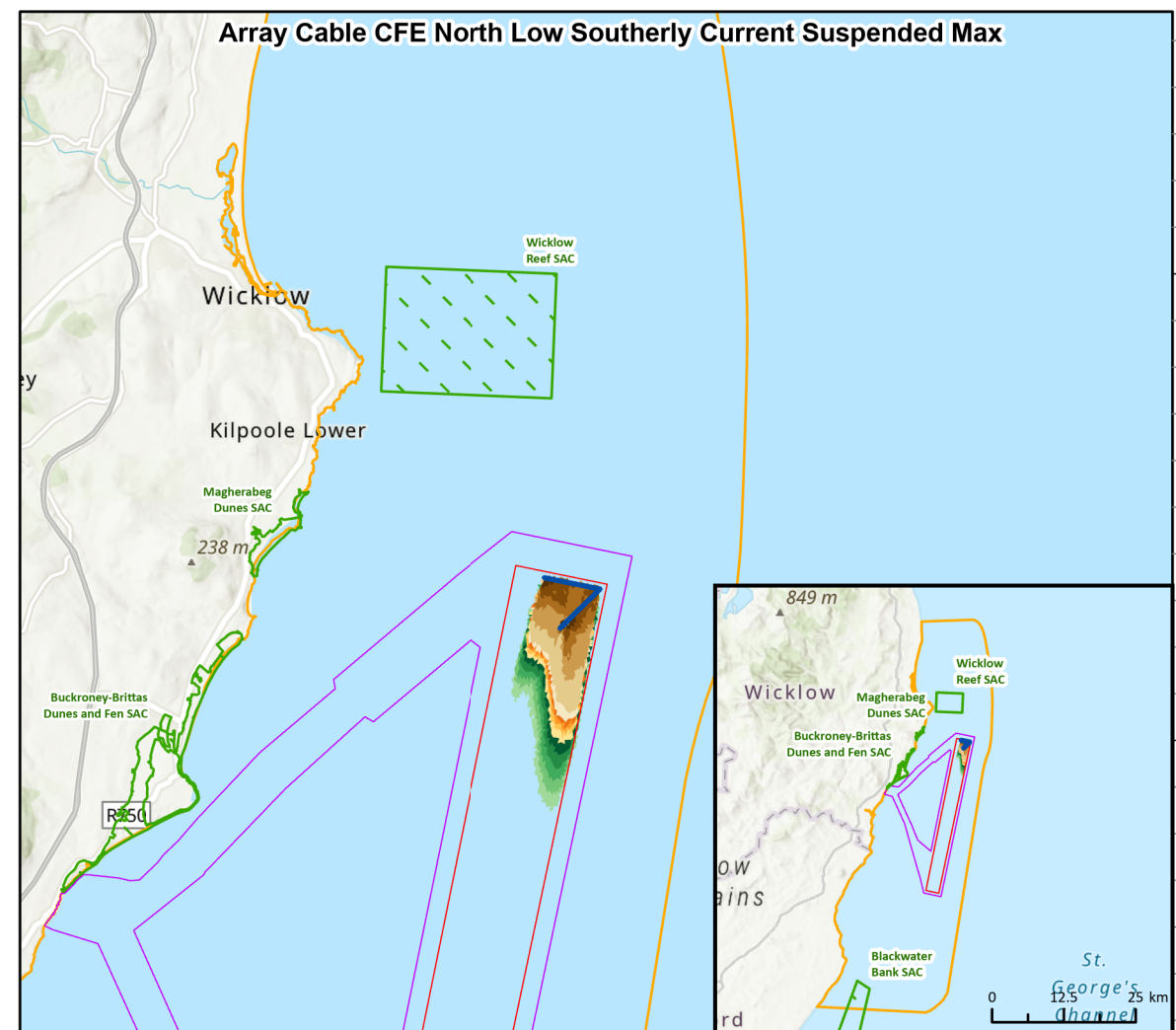
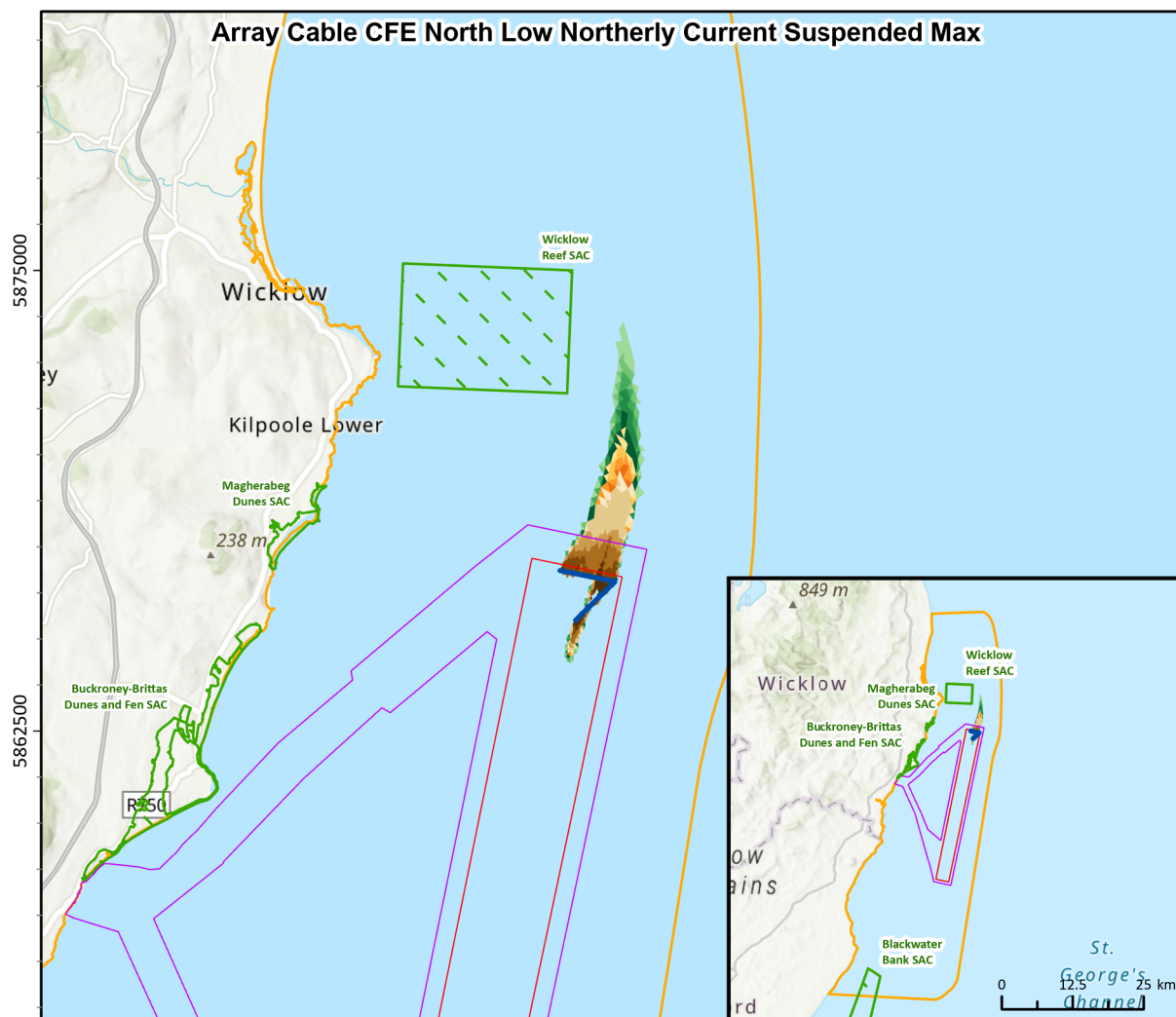
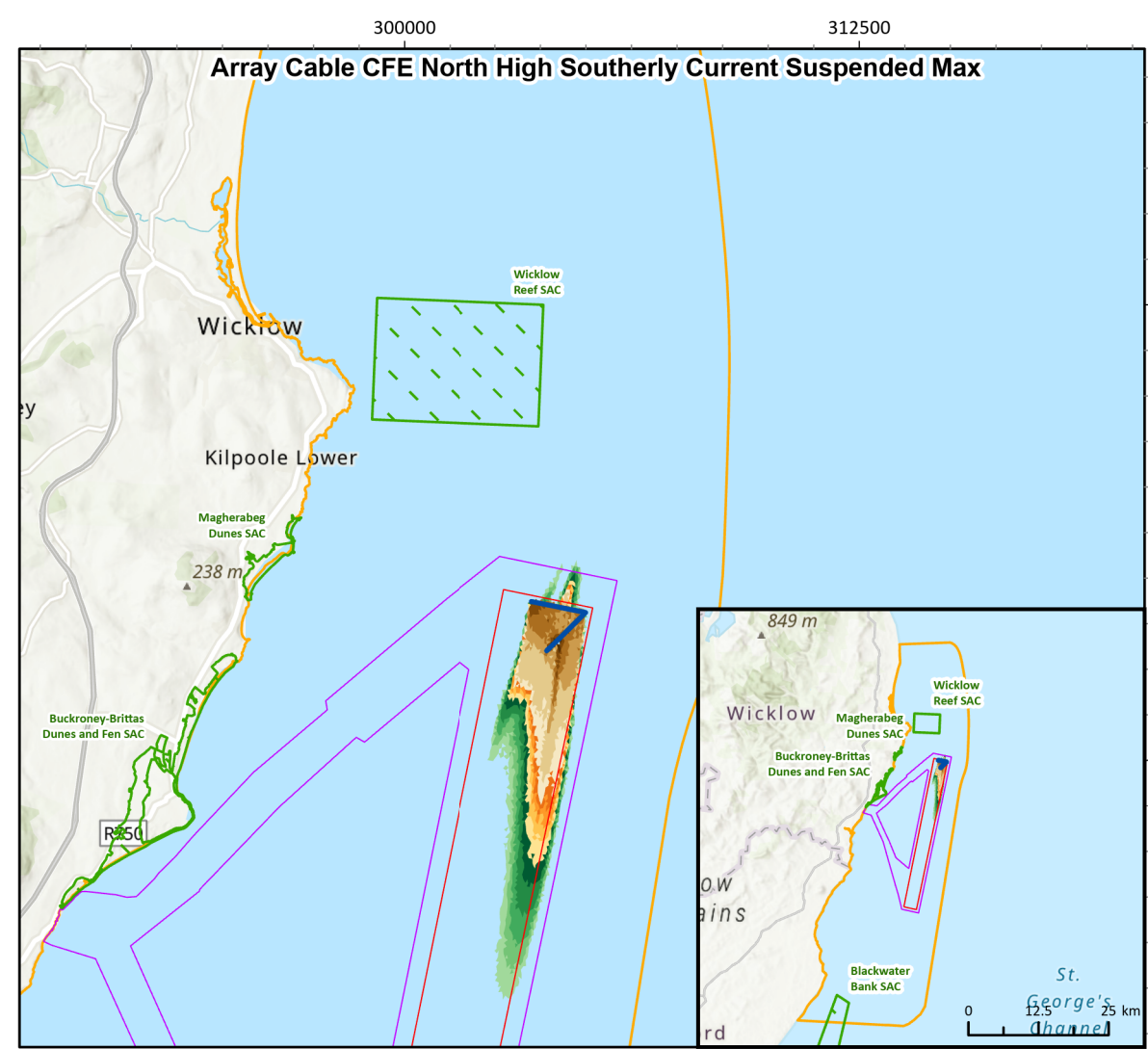
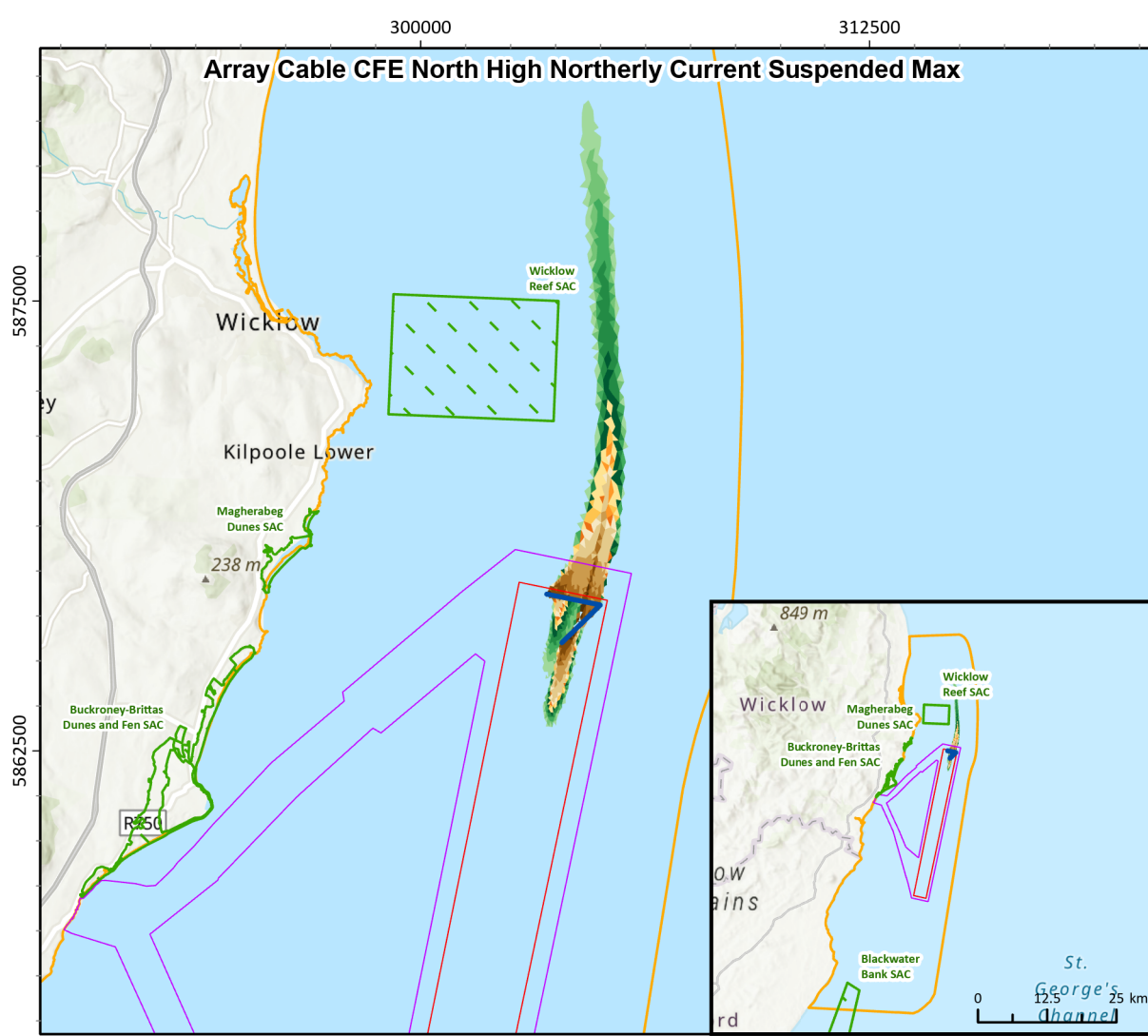


Figure Reference: Ark_Fig6.22_SuspendedSediment_ArrayCable_North